

Human HLA-A*11:01&B2M&LMP2 (SSCSCPLTK) Monomer Protein



Cat. No. MHC-HM410

Description

| | |
|-------------------------|--|
| Source | Recombinant Human LMP2(HLA-A*11:01) Protein is expressed from HEK293 with His tag and Avi tag at the C-Terminus. It contains Gly25-Thr305(HLA-A*11:01),Ile21-Met119(B2M) and SSCSCPLTK peptide. |
| Accession | AAV53343.1(HLA-A*11:01)&P61769(B2M)&SSCSCPLTK |
| Molecular Weight | The protein has a predicted MW of 50.4 kDa. Due to glycosylation, the protein migrates to 51-60 kDa based on Bis-Tris PAGE result. |
| Endotoxin | Less than 1EU per µg by the LAL method. |
| Purity | > 95% as determined by Bis-Tris PAGE > 95% as determined by HPLC |

Formulation and Storage

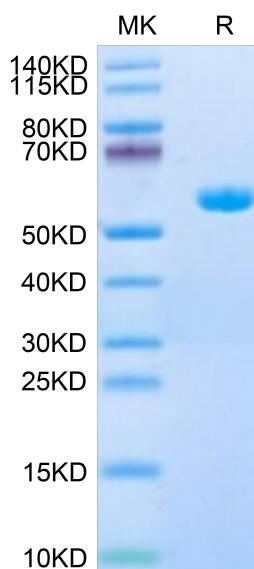
| | |
|-----------------------|--|
| Formulation | Lyophilized from 0.22µm filtered solution in PBS (pH 7.4). Normally 8% trehalose is added as protectant before lyophilization. |
| Reconstitution | Centrifuge the tube before opening. Reconstituting to a concentration more than 100 µg/ml is recommended. Dissolve the lyophilized protein in distilled water. |
| Storage | -20 to -80°C for 12 months as supplied from date of receipt. -80°C for 3-6 months after reconstitution. 2-8°C for 2-7 days after reconstitution. Recommend to aliquot the protein into smaller quantities for optimal storage. Please minimize freeze-thaw cycles. |

Background

The immunoproteasome, having been linked to neurodegenerative diseases and hematological cancers, has been shown to play an important role in MHC class I antigen presentation. The development of molecular probes that selectively inhibit the major catalytic subunit, LMP2, of the immunoproteasome, LMP2-rich cancer cells compared to LMP2-deficient cancer cells are more sensitive to growth inhibition by the LMP2-specific inhibitor, implicating an important role of LMP2 in regulating cell growth of malignant tumors that highly express LMP2.

Assay Data

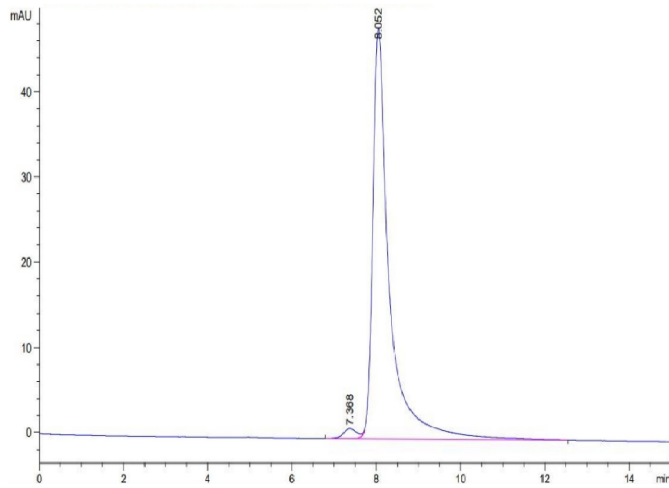
Bis-Tris PAGE



Human HLA-A*11:01&B2M&LMP2 (SSCSCPLTK) Monomer on Bis-Tris PAGE under reduced condition. The purity is greater than 95%.

SEC-HPLC

Assay Data



The purity of Human HLA-A*11:01&B2M&LMP2 (SSCSCPLTK) Monomer is greater than 95% as determined by SEC-HPLC.